

# POWER CORPORATION



## PORTABLE INSTRUMENTS

[www.powercorporation.in](http://www.powercorporation.in) || +91 937 618 1613



# DIGITAL MULTIMETER - DM6000AR



## About this item:

Versatile Digital Multimeter - Accurately measures AC/DC Current, AC/DC Voltage, Capacitance, Frequency, Duty Cycle, Resistance, Diode, Continuity and Temperature.

Thoughtful Design - Support Data Hold, Large LCD Backlit Screen, Auto Shut-off and Hanging Magnet, and Kickstand make the process of measurements easier. Professional level is reflected in some features that includes Auto-Ranging capability, and True RMS for measuring both AC Current and Voltage.

Suitable For - Industrial & Laboratory Use.

Ensure Safety - Double ceramic fuse is anti-burn and protects from overloading. F400mA/600V and F10A/600V explosion-proof ceramic fuse tubes can protect the multimeter effectively.



### MULTI-FUNCTIONS

Versatile functions satisfy your needs in multiple fields



### AC/DC Voltage Test

Note: Please take off the cap before using the test leads



### Ease of Use

Convenient features like Data Hold, Large LCD Backlit Screen and Hanging Magnet, and Kickstand make taking and recording measurements easier than ever before.

### TEMPERATURE TEST

Carefully touch the end of the thermocouple to the object being measured; Wait for the temperature reading to settle, then record the result from the LCD display



Intelligent Anti-burn and Double Protection Built-in F400mA/600V and F10A/600V explosion-proof ceramic fuse tubes; Double Protection, more secure and reliable; The fuses can protect the multimeter effectively; Overload protection on all ranges.



Hanging Magnet and Kickstand Hanging magnet and kickstand make taking and recording measurements easier than ever before.



Backlit LCD and Data Hold Large digital display with backlit LCD for visibility in dimly light areas; It is often easier to use the data hold function to freeze the data being displayed on the digital display.



Temperature Test Carefully touch the end of the thermocouple to the object being measured; Wait for the temperature reading to settle, then record the result from the LCD display.



Multi-Function Socket Use the multi-function socket to measure both Capacitors and Transistors.



Troubleshoot Electrical Problems AstroAI multimeter is professionally designed to troubleshoot electrical problems or just for electronics training. e temperature reading to settle, then record the result from the LCD display.



# DIGITAL MULTIMETER - 21D

AoKoZo

## Features:

6000 Counts, True RMS, 49\*28mm Screen, Automatic Range.

AC & DC Current, AC&DC Voltage, Continuity, Resistance, Capacitance, Diodes, Temperature, Frequency, Duty cycle. Diagnose automotive, industrial and domestic electrical problems.

RoHS, IEC-61010 600V CAT II safety level, intelligent antiburn, double fuses, protective rubber case.

NCV function, Data Hold, Night assist function, Bracket Function, Automatic shutdown, etc.

## Parameters:

DC voltage: 600mV / 6V / 60V / 600V; Accuracy:  $\pm 0.5\%$  reading + 5number)

AC voltage: 600mv / 6V / 60V / 600V; Accuracy:  $\pm (1\%$  reading + 4number)

DC current: 600 $\mu$ A / 60mA / 600mA; Accuracy:  $\pm (1.2\%$  reading + 5number)

DC current: 10A; Accuracy:  $\pm (3\%$  reading + 5number) AC current: 60mA / 600mA; Accuracy:  $\pm (1.5\%$  reading + 5number)

AC current: 10A; Accuracy:  $\pm (3\%$  reading + 5number)

Frequency: 9.999HZ / 99.99HZ / 999.9HZ / 9.999KHZ / 99.99KHZ / 99.9KHZ / 9.999MHZ; Accuracy:  $\pm (1.5\%$  reading + 5number)

Resistance: 600 $\Omega$  / 6K $\Omega$  / 60K $\Omega$  / 600K $\Omega$  / 6M $\Omega$  / 60M $\Omega$ ; Accuracy:  $\pm (0.8\%$  reading + 5number)

Capacitance: 60nF / 600nF / 6 $\mu$ F / 60 $\mu$ F / 600 $\mu$ F / 6mF / 100mF; Accuracy:  $\pm (4.0\%$  reading + 5number)





# DIGITAL CLAMPMETER - 3016D

# FKM

## Features:

6000 Counts Clampmeter

AC Current: 6A/60A/600A  $\pm(2.5\% + 10)$

DC Voltage: 600mV/6V/60V/600V  $\pm(1.0\% + 5)$

AC Voltage: 6V/60V  $\pm(1.0\% + 5)$  / 600V  $\pm(1.2\% + 5)$

Frequency: 99.99Hz/999.9Hz/9.999kHz  $\pm(0.5\% + 5)$

Duty Cycle: 0.1 - 99.9%:  $\pm 3.0\%$

Resistance: 600  $\Omega$  / 6k  $\Omega$  / 60k  $\Omega$  / 600k  $\Omega$ :  $\pm(0.8\% + 3)$ ,  
6M  $\Omega$  / 60M  $\Omega$ :  $\pm(1.2\% + 3)$

Capacitance:

9.999nF/99.99nF/999.9nF/9.999  $\mu$ F/99.99  $\mu$ F/999.9  $\mu$ F:  $\pm (3.0\% + 5)$ , 9.999mF:  $\pm(5.0\% + 5)$ , 99.99mF: Uncalibrated

Continuity Test: If the resistance of the tested circuit is less than 10, the buzzer will sound.

Diode Test: Show the approximate diode forward voltage value

Temperature Measurement: -58°F—600°F:  $\pm(1.2\% + 6d)$ , 601°F—1832°F:  $\pm(1.9\% + 6d)$

Non-contact Voltage Detection (NCV): FKM Clampmeter can effectively check the electrical status by measuring EM field intensity without touching any wires. Set the rotary function switch to the NCV range position, then use the clamp head to approach the main phase line or the power switch, or the socket.



**PATENTED Double Open Clamp**  
**EASY OPERATION**

## VERSATILE

AC Voltage, Frequency, Flashlight, Etc.



## 6000 COUNTS

High-definition Backlit LCD





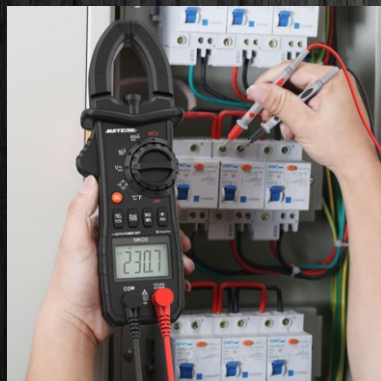
# DIGITAL CLAMPMETER - MK-05

**METERK**



## Specifications:

- AC Current Range and Accuracy(A): 6A/60A/600A  $\pm (2.5\%+10)$
- AC Current Resolution: 0.001A/0.01A/0.1A
- AC Voltage Range and Accuracy(V): 6V-60V  $\pm (1.0\%+5)$ , 600V  $\pm (1.2\%+5)$
- AC Voltage Resolution: 0.001V/0.01V/0.1V
- DC Voltage Range and Accuracy(V): 6V/60V/600V  $\pm (1.0\%+5)$
- DC Voltage Resolution: 0.001V/0.01V/0.1V
- Frequency Range and Accuracy(V): 99.99Hz/999.9Hz/9.999kHz  $\pm (1.5\%+5)$
- Frequency Resolution: 0.01Hz/0.1Hz/0.001kHz
- Resistance Range and Accuracy( $\Omega$ ): 600 $\Omega$ /6K $\Omega$ /60K $\Omega$ /600K $\Omega$   $\pm (0.8\%+3)$ , 6M $\Omega$ /60M $\Omega$   $\pm (1.2\%+3)$
- Resistance Resolution: 0.1 $\Omega$ /0.001K $\Omega$ /0.01K $\Omega$ /0.1K $\Omega$ /0.001M $\Omega$ /0.1M $\Omega$
- Capacitance Range and Accuracy(F): 9.999nF/99.99nF/999.9nF/9.999 $\mu$ F/99.99 $\mu$ F/999.9 $\mu$ F  $\pm (3.0\%+5)$ , 9.999mF  $\pm (5.0\%+5)$ , 99.99mF No Defined
- Capacitance Resolution: 0.001nF/0.01nF/0.1nF/0.001 $\mu$ F/0.01 $\mu$ F/0.1 $\mu$ F/0.001mF/0.01mF
- Temperature Range and Accuracy: -32~300 $^{\circ}$ C (-25.6~572 $^{\circ}$ F)  $\pm (1.0\%+2)$





# DIGITAL MULTIMETER - Vpro-850L

**METERK**

## About this item:

**VERSATILE DIGITAL MULTIMETER:** Suitable for all kinds of household use and industrial use. Can be use at Household Outlets, Fuses, Batteries (including Vehicles), Automotive Circuit Troubleshooting, Charging System, Testing electronics in Cars etc. It is a AC/DC Voltmeter, Ohm Volt Amp Tester, Electric Ohmmeter, Diode, Resistance and Audible Continuity Detector.

**Troubleshooting with Speed and accuracy:** This Multimeter has a sampling speed of 2 times per second; Built-in a backlight LCD display with 3 1/2 digits (1999 count) 0.6", and high polarity including negative and positive readings.

**Electronic Tester Multimeter with Over-load Protection and Low-Power Reminder:** Use the PTC protection circuit for Resistance, and frequency measurement. Over-load indication "1" will be displayed; Low battery indication will be displayed when battery power is low.

**Built in Audible Continuity Test Voltmeter and Data Hold :** Buzzer will work if the resistance is lower than  $30\Omega \pm 20\Omega$ ; Data Hold Function for clear reading; The Weepro digital multimeter comes with an insulated rubber case kickstand to help better grips and easier reading, and with the ABS material use at the same time provide users maximum safety.

## Specifications:

1. DC Voltage:  $200\text{mV}-600\text{V} \pm(0.5 \pm 2\text{dpts})$
2. AC Voltage:  $200/600\text{V} \pm(1.2 \pm 10\text{dpts})$
3. DC Current:  $200\mu\text{A}-10\text{A} \pm(1.0\%+2\text{dpts})$
4. Resistance:  $200\Omega \quad 2\text{M}\Omega \pm(0.8 \pm 3\text{dpts})$
5. Power supply: 9V,6F22
6. Max. display: 1999
7. Diode: Yes; Dynatron: Yes; LCD Backlight: Yes; Continuity Buzzer: Yes; Low Battery Indication: Yes; Data Hold: Yes
8. Input Impedance for DCV:  $1\text{M}\Omega$
9. Sample Rate: 3times/S
10. LCD Size: 70 x 40mm





# DIGITAL IR THERMOMETER NUB8550H

Nubee

## Features:

- Industrial grade IR thermometer -50°C to +550°C (-58°F to +1022°F) with adjustable emissivity and Max Display Non Contact temperature gun with Laser Beam.
- Accuracy:  $\pm 2^{\circ}\text{C}$  /  $\pm 2\%$
- Resolution:  $0.1^{\circ}\text{C}$  or  $0.1^{\circ}\text{F}$
- $^{\circ}\text{C}/^{\circ}\text{F}$  selectable
- Emissivity: 0.1-1.0
- Response Time & Wavelength: 500ms & 8-14 $\mu\text{m}$
- Auto power shut off
- Auto data hold
- Low battery indication
- 9V DC battery included



## 12:1 Distance To Spot Ratio





# DIGITAL IR THERMOMETER WT-320

wintact®

## Features:

- Industrial grade IR thermometer -50°C to +380°C (-58°F to +716°F)
- Accuracy:  $\pm 1.5^{\circ}\text{C}$  /  $\pm 1.5\%$
- Resolution:  $0.1^{\circ}\text{C}$  or  $0.1^{\circ}\text{F}$
- Distance Spot Ratio: 12:1
- $^{\circ}\text{C}/^{\circ}\text{F}$  selectable
- Emissivity: 0.95 (fixed, 0.8 (optional)
- Self Calibration Function:  $\pm 1.5^{\circ}$
- Auto power shut off
- Auto data hold
- Laser ON/OFF selectable
- Backlight ON/OFF selectable
- Battery included



LCD display & buttons



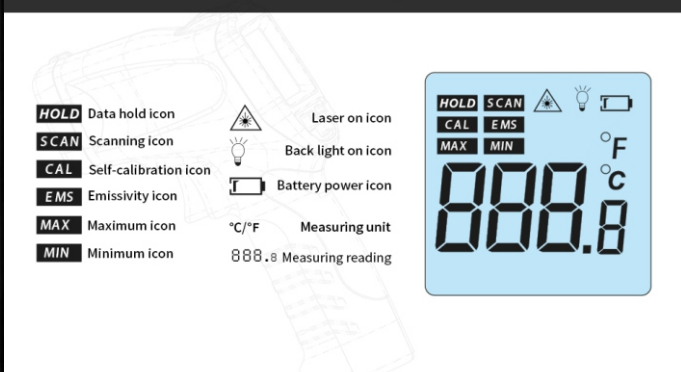
\* User can calibrate the infrared thermometer between -5.0°C and +5.0°C under self calibration mode.  
\* Emissivity: 0.95 Preset, 0.8 Optional



Component



LCD Display

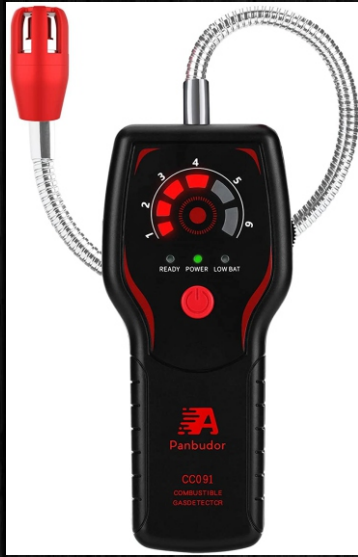




# COMBUSTIBLE GAS DETECTOR

**PANBUDOR**

## About this item



- **DETECTS A WIDE RANGE OF COMBUSTIBLE GASES:** The CC091 gas leak detector can quickly detect and locate known leaks of combustible gases such as natural gas, propane, methane, sewer gas, fuel gas, LPG, LNG, and other flammable gases.
- **HIGH SENSITIVITY and ADJUSTABLE:** 50 to 10,000 ppm (based on methane), and alerts immediately when the sensor probe finds the leak. The sensitivity of the sensor is adjustable, you can increase or decrease the gas sensitivity to find the leak in different situations.
- **SIMPLE TO USE:** Powered by 3 AAA batteries (not included), the CC091 portable gas leak detector features a bendable 12.6-inch sensor probes that allows you to reach hard-to-reach areas such as the kitchen, basement, VR or other confined spaces from any direction.
- **AUDIBLE & VISUAL ALARM:** Visual 6 LEDs and 85dB audible warnings increasing with gas concentration, gas leak indicators have 6 levels, 1 means lower, 6 means higher and gas sensor sniffer reaches the source of gas leaks.

## GAS DETECTOR

widely used in a variety of areas to keep our safety & save monthly bills



## Detactable Gases:

1. Ammonia
2. Butane
3. Ethanol
4. Gasoline
5. Industrial Solvent
6. Methane
7. Naphtha
8. Natural Gas
9. Propane
10. Spraying Fuel

## KEEP YOUR HOME SAFE

Combustible gases leaks like natural gas, propane, methane, butane, LP, LNG, LPG, fuel and other flammable gas is great risk.



## COMBUSTIBLE GAS LEAK DETECTOR



## Typical Applications





# DIGITAL ANGLE GAUGE & LEVEL 935DAG



## About this item:

This Digital Angle Gauge and Level can measure or set angles, check relative angles with zero calibration feature, or can be used as a digital level

High visibility reverse contrast display improves visibility in dimly lit work environments

Strong magnetic base to attaches to conduit, pipes, saw blades, vents, ducts, and other ferromagnetic surfaces

V-groove edges enable optimal alignment on conduits and pipes for bending and alignment

0 to 90-Degree and 0 to 180-Degree measurement ranges provide easy use in applications such as woodworking, bending conduit, installing electrical panels, and working on machinery

0 to 180-Degree range is useful when accounting for kickback in pipe bending applications when bending to 90-Degree or more

Display auto-rotates when upside-down for easy viewing.

